



PROVIEW™

EYE PRESSURE MONITOR



Your PROVIEW™ IOP MONITORING KIT includes:

- PROVIEW™ EYE PRESSURE MONITOR — easy to use, lightweight, durable
- PROVIEW *Patient Log Book* — a place to record daily IOP readings
- PROVIEW *Instruction Booklet* — simple steps on how to get the most out of monitoring IOP at home
- *EYE ON IOP* — brochure with interesting facts about IOP and glaucoma management
- Carrying case — for IOP readings on the go
- Magnifier — makes reading easier
- Sight Savers™ alcohol wipes

Directions for the right eye



STEP 1: Pick up the PROVIEW™ device with left hand and hold between your index finger and thumb.



STEP 2: While keeping head straight, look down at your right elbow, moving only your eyes, not your head.



STEP 3: Keeping right eyelid partially open, gently press the PROVIEW probe against your right, upper eyelid — just below the edge of the eyebrow at the top of the nose.



STEP 4: Slowly increase pressure against your upper eyelid until you see a phosphene, a dark spot with a ring of light around it, like those illustrated above. The image should appear opposite to where you are applying pressure. If you don't see a phosphene, remove the device from your upper eyelid, push the reset button, and try again.



STEP 5: When you detect a phosphene, immediately remove the PROVIEW device from your eyelid and read the measurement on the scale. (Scale intervals are 2 mm apart.) If you are having trouble reading the scale, use the enclosed magnifier for your convenience.



STEP 6: Record your PROVIEW measurement in your Patient Log Book. Be sure to note the time and date on which you take the reading, as well as any other information your doctor has requested, including the type of eye medication you are taking and the time you last took your eye medication. Reset the PROVIEW device by pushing the reset button before you take your next reading.

DIRECTIONS FOR THE LEFT EYE ON BACK.

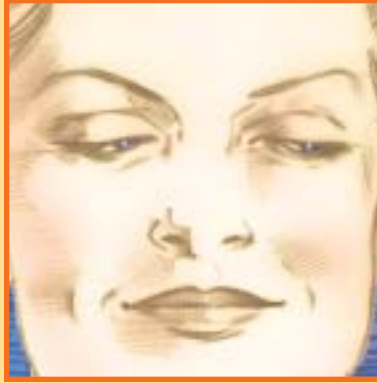


PROVIEW™
EYE PRESSURE MONITOR

Directions for the Left eye



STEP 1: Pick up the PROVIEW™ device with right hand and hold between your index finger and thumb.



STEP 2: While keeping head straight, look down at your left elbow, moving only your eyes, not your head.



STEP 3: Keeping left eyelid partially open, gently press the PROVIEW probe against your left, upper eyelid — just below the edge of the eyebrow at the top of the nose.



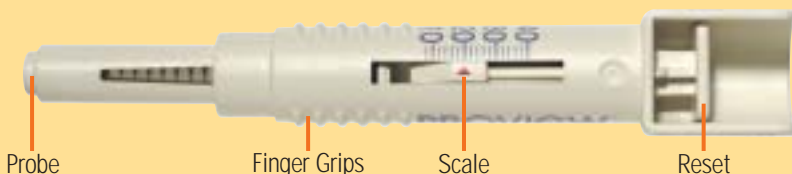
STEP 4: Slowly increase pressure against your upper eyelid until you see a phosphene, a dark spot with a ring of light around it, like those illustrated above. The image should appear opposite to where you are applying pressure. If you don't see a phosphene, remove the device from your upper eyelid, push the reset button, and try again.



STEP 5: When you detect a phosphene, immediately remove the PROVIEW device from your eyelid and read the measurement on the scale. (Scale intervals are 2 mm apart.) If you are having trouble reading the scale, use the enclosed magnifier for your convenience.



STEP 6: Record your PROVIEW measurement in your Patient Log Book. Be sure to note the time and date on which you take the reading, as well as any other information your doctor has requested, including the type of eye medication you are taking and the time you last took your eye medication. Reset the PROVIEW device by pushing the reset button before you take your next reading.



PROVIEW™
EYE PRESSURE MONITOR

**BAUSCH
& LOMB**

PROVIEW is a trademark of Bausch & Lomb, Incorporated.
© Bausch & Lomb, Incorporated. All Rights Reserved.

July 2001

PV-0012